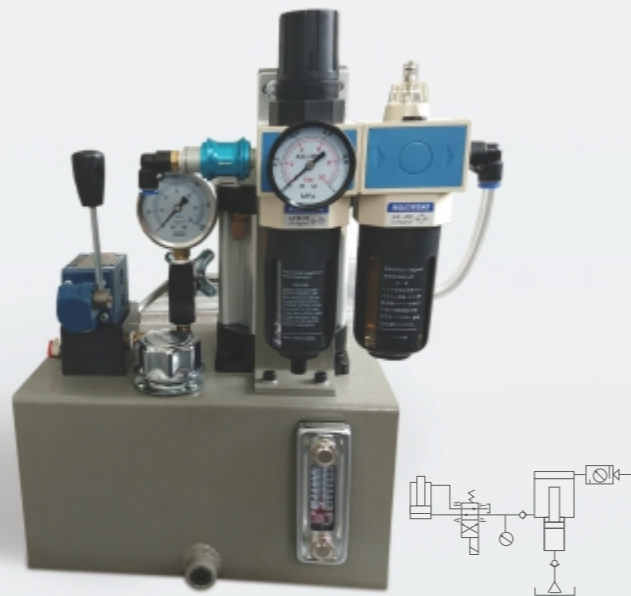


AHP

氣動增壓泵

AHP PNEUMATIC BOOSTER PUMP



產品特性

利用空氣壓驅動增壓泵浦,輸出油壓力,作為油壓缸之動力源,流量大於一般增壓倍數,連續式增壓,作動缸無增壓行程之限制。

以空氣調壓閥調整壓力,達到增壓倍數即停止驅動,油壓壓降時,泵浦將會自動補償,特別適用於長時間油壓夾持,節省能源,不產生油溫,經濟方便。

A型:安裝ISO規格油路板及電磁閥,適用於單動或復動油壓缸,安裝電磁球閥改善內泄量問題,保固氣動泵浦使用壽命。

B型:附配管座PT孔,可連接油壓手動閥操作。

雙泵浦爭鬥組合可選購增壓比,特別適用於低壓與高壓同時使用之夾治具。

油箱體積小,節省空間,安裝容易。

FEATURES

The booster pump is driven by air to output hydraulic pressure. As a power source for hydraulic cylinder, its flow rate is bigger than that of a conventional booster. Continuous pressure boosting and no limitation of booster stroke for the acting cylinder.

Pressure adjustment is made by an air pressure regulation valve. Once pressure reaches the desired valve, drive stops immediately. In case pressure drops, the pump will compensate pressure automatically. The series is especially ideal for longtime hydraulic clamping application. Also features energy saving no oil temperature growth, economical and convenient.

A type: Equipped with ISO approved manifold and solenoid valve, applicable for single acting or double acting hydraulic cylinder. B type: Equipped with pipe block with PT ports, permitting for connecting to a manual control valve for operational control.

When double-pump is applied, you can select the boost pressure ratio. It is especially suitable for jig and fixture which requires high and low pressure operation together.

Reduced oil tank volume for space saving and convenient installation.

最大操作壓力: 6 kgf/cm²

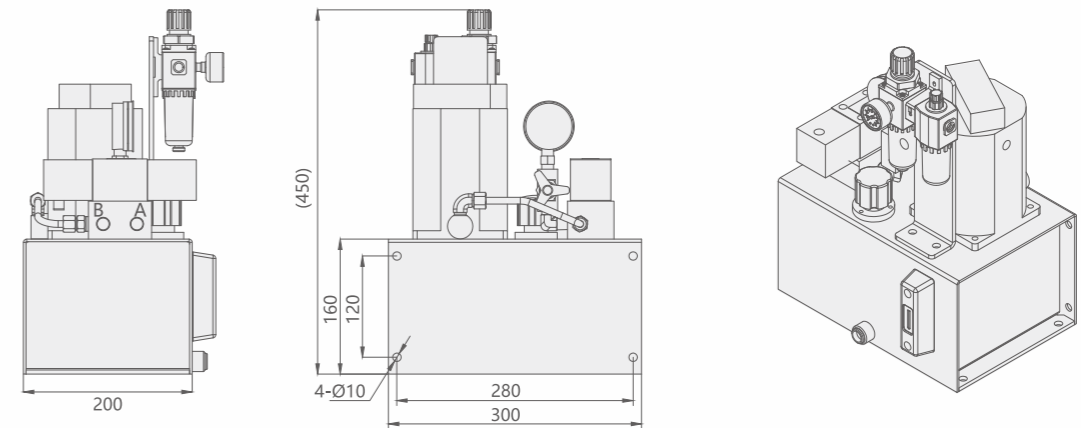
Max. operating pressure: 6 kgf/cm²

訂購標示法 ORDERING INDICATION

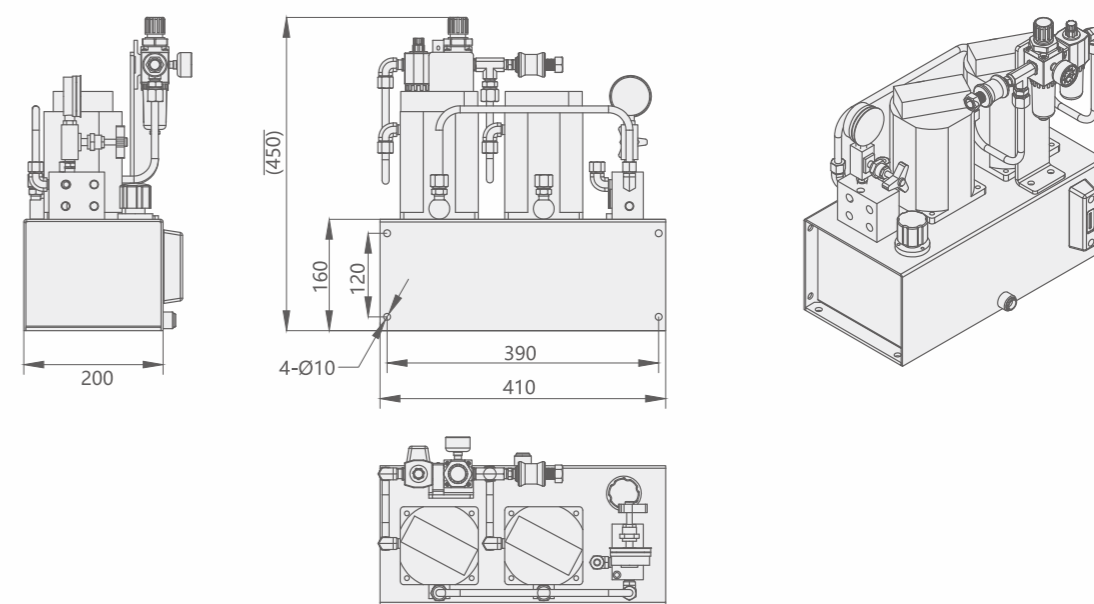
示例: AHP-10-S-A-AC110V

AHP	系列	AHP
10	增壓倍數 Booster pressure rate	05,10,16,25,44
S	泵浦形式	S: 單泵 Single pump D: 雙泵 Double pump
A	控制型式 Control type	A: ISO規格油路板 Manifold, magnet valve B: 配管壓PT孔 Distributing tube seat P.T port
AC110V	線圈型式 Coil type	AC110V, AC220V, DC24V

單泵組外形尺寸



雙泵組外形尺寸



規格參數表 SPECIFICATION

增壓倍數	油壓吐油量	油箱容積	使用液壓油
BOOSTER PRESSURE RATE	HYDRAULIC FLUID EXPELLED (l/min)	OIL TANK CAPACITY	OIL
05	12	單泵 single pump 5L 雙泵 Double pump 7.8L	ISO-VG32#
10	5		
16	3		
25	2.5		
44	1.4		