

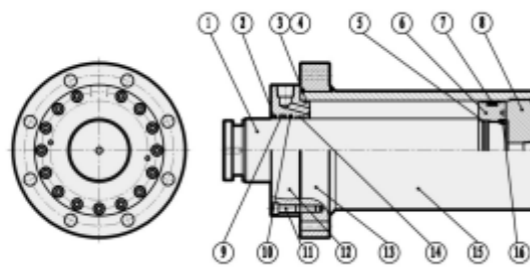
# CHRO

## 系列大型油壓缸

### CHRO SERIES 21 MPA ROUND HYDRAULIC CYLINDER



#### 大型油壓缸結構圖 INSIDE STRUCTURE



CHROA

NO	零件名 Part name	數量 Quantity	NO	零件名 Part name	數量 Quantity	NO	零件名 Part name	數量 Quantity
1	活塞桿 Piston rod	1	7	活塞專用密封圈 Piston Seal	2	13	法蘭板 Front flange	1
2	防塵油封 Dustproof seal	1	8	後端蓋 End cover	1	14	導向帶 Guidance tape	1
3	O型圈 Gasket	1	9	軸用油封 Oil seal for shaft	1	15	缸筒 Cylinder tube	1
4	O型圈支撐環 Gasket support ring	1	10	活塞桿階梯封 Rod ladder seal	1	16	止動螺釘 Lock screw	1
5	O型圈 Gasket	1	11	內六角螺釘 Socket Head cup screw	15			
6	活塞 Piston	1	12	前端蓋 Rod Cover	1			

#### 大型油壓缸特性資料 Specifications

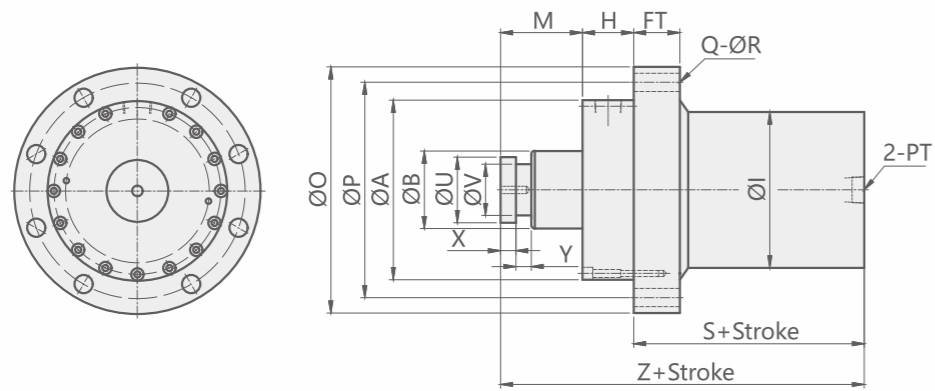
油缸內徑 Hydraulic cylinder inside diameter(mm)	Φ125	Φ150	Φ180	Φ200	Φ225	Φ250	Φ280	Φ300
工作流體 Power Fluid	以濾清之標準液壓油 Filtered Oil							
缸管材質 Material of cylinder barrel	碳鋼管 Carbon steel STKM-13c/白鐵管 Stainless tubes SUS 304							
使用壓力範圍 The range of pressure(MPa)	1-21MPa(10-210kg/cm <sup>2</sup> )							
使用速度範圍 The range of speed (mm/sec)	8~500(mm/sec)							
使用溫度範圍 Range of temperature(°C)	-30 ~ +100 (°C)							
標準活塞長度 Length of standard piston (PM)	60	60	70	70	70	70	70	70
訂製行程於1501-2500mm間活塞長度 (PM) Piston length when the stroke is between 1501-2500 mm	120	120	140	140	140	140	140	150
訂製行程於2501-4000mm時活塞長度 (PM) Customized stroke is 2501-4000mm	200	200	200	200	200	200	200	200

#### 訂購標示法 ORDERING INDICATION

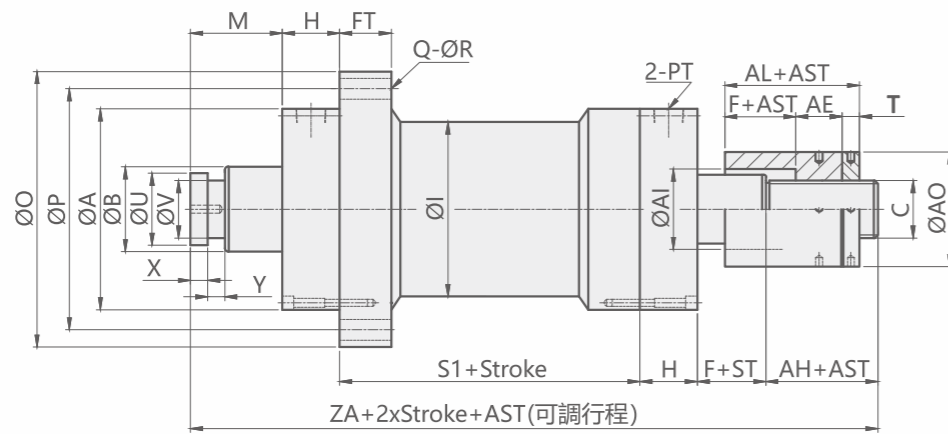
示例: CHROA-125/60-100-Y-DM

CHROA	系列 Series	CHROA PT在法蘭前 PT in front of flange		CHROB PT在法蘭後 PT in rear of flange	
		CHROC CA型 CA type		CHROD 雙軸型 Double Rods type	
		CHROE 法蘭在後側 Rear flange type			
125	油缸內徑 Hydraulic cylinder inside diameter		Φ125 Φ150 Φ180 Φ200 Φ225 Φ250 Φ280 Φ300		
60	軸心 Rod	標準 Standard 最大 Max	Φ60 Φ80 Φ100 Φ125 Φ140 Φ160 Φ180 Φ200 Φ80 Φ100 Φ120 Φ140 Φ160 Φ200 Φ220 Φ250		
100	行程 Stroke	鋼管 Steel barrel (Φ125-Φ300)	最大行程: 4米 Max:4m		
Y	軸心固定型式 Accessories	YP Y附Pin		TW 半月套 TW rod end mounting	
		Y connectors with pin		TH 半月套+焊套 TH rod end mounting	
		I I型接頭 I connectors		A 可調螺帽 Adjustable nut	
DM	無記號: 心車溝 Blank: Standard DM: 車牙型 DM type				

標準 CHROA 型 標準A型 Single Rod Type



標準 CHROD 型 雙軸型附可調帽 Double Rods with Adjustable Nut Type



Unit:mm

CHROA-CHROD TYPE																				A(可調帽)TYPE								
BORE	A	B	C	F	FT	H	I	M	O	P	PM	PT	Q	R	S	S1	T	U	V	X	Y	Z	ZA	AH	AE	AI	AO	AL
Φ125	175	60	M50XP2.0	25	45	50	152	80	240	210	60	3/4"	6	18	125	100	15	60	50	15	15	255	355	50	35	70	100	60
Φ150	200	80	M70XP2.0	25	50	50	180	80	280	240	60	1"	6	18	130	100	20	80	70	15	15	260	365	60	40	95	120	65
Φ180	240	100	M90XP2.0	30	60	60	216	100	320	280	70	1"	6	18	150	110	30	95	85	25	25	310	430	70	40	120	150	70
Φ200	260	125	M100XP2.0	30	65	70	242	100	350	310	70	1.1/4"	6	20	155	110	30	115	100	25	25	325	450	70	40	140	180	70
Φ225	290	140	M120XP3.0	30	70	70	270	120	380	340	70	1.1/4"	8	20	160	110	30	135	120	25	25	350	475	75	45	160	200	75
Φ250	330	160	M140XP3.0	30	75	75	298	120	440	380	70	1.1/4"	8	24	170	120	35	155	140	30	30	365	505	85	50	190	240	80
Φ280	360	180	M160XP3.0	30	80	80	330	150	500	430	70	1.1/2"	10	26	175	120	40	175	150	30	30	405	550	90	50	210	260	80
Φ300	380	200	M180XP3.0	35	85	90	350	150	550	460	90	1.1/2"	10	28	200	140	40	195	170	35	35	440	605	100	60	230	290	95

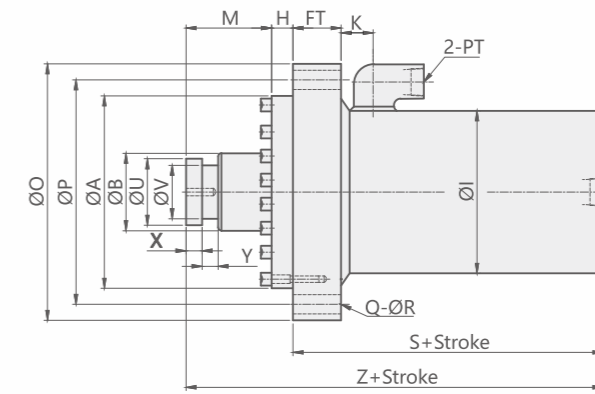
注意事項

- 1.CHRO行程超過1500mm時，活塞長度 (PM)自行加長，其加長尺寸請參閱特性資料表。
- 2.本系列軸心加大時，其相關尺寸依加大比例自行放大。
- 3.AST為客戶指定之可調行程。

NOTE

- 1.Piston length proportionally extends if the stroke of CHRO is more than 1500mm,the extending length conforms to characteristics table.
- 2.In this hydraulic cylinder series,relevant size of the other part proportionally extends when the rods is extending.
- 3.AST stands for adjustable stroke designated by customers.

標準CHROB型標準B型Single Rod B Type



Unit:mm

CHROB TYPE																			
BORE	A	B	FT	H	I	K	M	O	P	PM	PT	Q	R	S	U	V	X	Y	Z
Φ125	180	60	45	20	152	30	80	240	210	60	3/4"	6	18	190	60	50	15	15	290
Φ150	205	80	50	20	180	30	80	280	240	60	1"	6	18	200	80	70	15	15	300
Φ180	245	100	60	30	216	30	100	320	280	70	1"	6	18	230	95	85	20	20	360
Φ200	265	125	65	30	242	35	100	350	310	70	1.1/4"	6	20	250	115	100	25	25	380
Φ225	295	140	70	35	270	35	120	380	340	70	1.1/4"	8	20	260	135	120	25	25	415
Φ250	335	160	75	35	298	40	120	440	380	70	1.1/4"	8	24	275	155	140	30	30	430
Φ280	365	180	80	40	330	40	150	500	430	70	1.1/2"	10	26	290	175	150	30	30	480
Φ300	385	200	85	40	350	45	150	550	460	90	1.1/2"	10	28	320	195	170	35	35	510

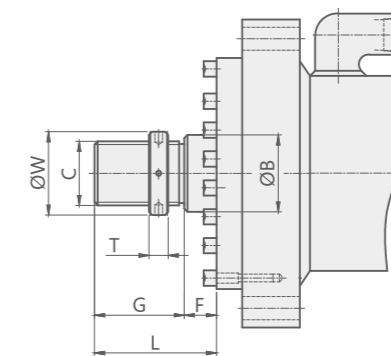
注意事項

- 1.CHRO行程超過1500mm時，活塞長度 (PM)自行加長，其加長尺寸請參閱特性資料表。
- 2.本系列軸心加大時，其相關尺寸依加大比例自行放大。

NOTE

- 1.Piston length proportionally extends if the stroke of CHRO is more than 1500mm,the extending length conforms to characteristics table.
- 2.In this hydraulic cylinder series,relevant size of other part proportionally extends when the rods is extending.

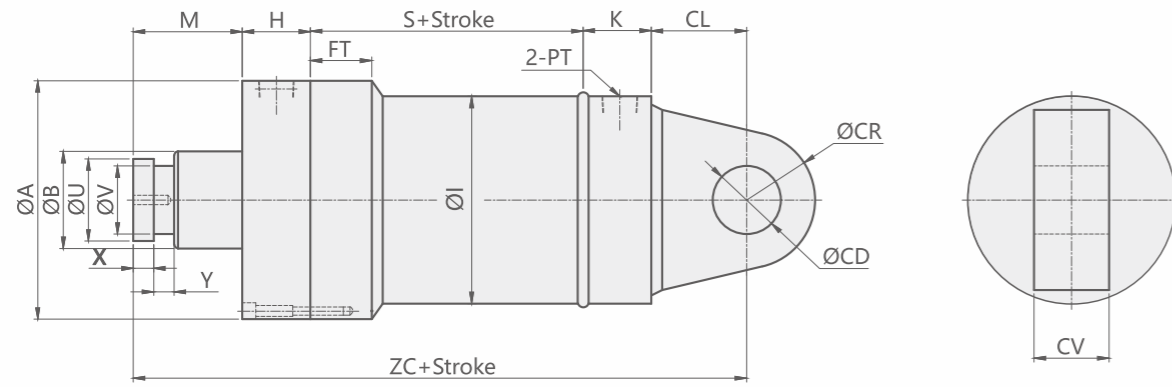
外牙型規格表 Vertical screw of rod



Unit:mm

CHROB TYPE							
BORE	B	C	F	G	L	T	W
Φ125	60	M50XP2.0	25	70	95	15	65
Φ150	80	M70XP2.0	25	80	105	20	95
Φ180	100	M90XP2.0	30	100	130	30	120
Φ200	125	M100XP2.0	30	120	150	30	140
Φ225	140	M120XP3.0	30	140	170	30	160
Φ250	160	M140XP3.0	30	150	180	35	190
Φ280	180	M160XP4.0	30	160	190	40	210
Φ300	200	M180XP4.0	35	160	195	40	230

標準 CHROC型 單耳軸型 Single Trunnion Mounting Type



Unit:mm

BORE	HROC TYPE														CA TYPE				
	A	B	H	I	FT	K	M	PM	PT	S	U	V	X	Y	ZC	CD	CL	CR	CV
Φ125	175	60	50	152	45	50	80	60	3/4"	100	60	50	15	15	270	50	70	50	55
Φ150	200	80	50	180	50	55	80	60	1"	100	80	70	15	15	285	60	80	60	60
Φ180	240	100	60	216	60	55	100	70	1"	110	95	85	20	20	325	70	100	70	80
Φ200	260	125	70	242	65	65	100	70	1.1/4"	110	115	100	25	25	355	80	110	80	90
Φ225	290	140	70	270	70	65	120	70	1.1/4"	110	135	120	25	25	365	90	120	90	100
Φ250	330	160	75	298	75	70	120	70	1.1/4"	115	155	140	30	30	410	100	150	100	120
Φ280	360	180	80	330	80	80	150	70	1.1/2"	115	175	150	30	30	425	100	150	100	120
Φ300	380	200	90	350	85	80	150	90	1.1/2"	135	195	170	35	35	465	120	160	120	140

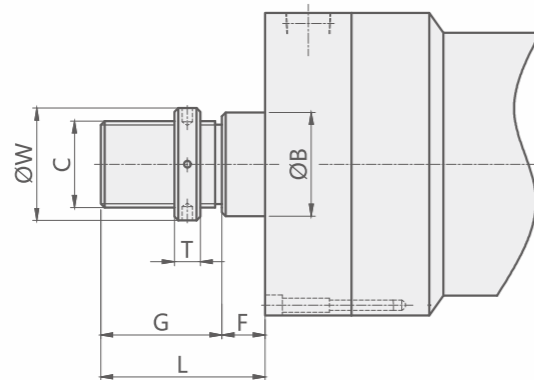
注意事項

- 1.CHRO行程超過1500mm時，活塞長度 (PM)自行加長，其加長尺寸請參閱特性資料表。
- 2.本系列軸心加大時，其相關尺寸依加大比例自行放大。

NOTE

- 1.Piston length proportionally extends if the stroke of CHRO is more than 1500mm,the extending length conforms to characteristics table.
- 2.In this hydraulic cylinder series,relevant size of other part proportionally extends when the rods is extending.

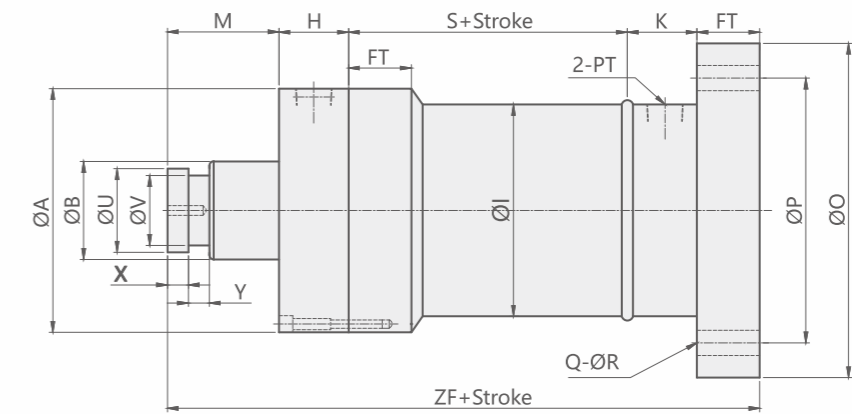
外牙型規格表 Vertical screw of rod



Unit:mm

BORE	B	C	F	G	L	T	W
Φ125	60	M50XP2.0	25	70	95	15	65
Φ150	80	M70XP2.0	25	80	105	20	95
Φ180	100	M90XP2.0	30	100	130	30	120
Φ200	125	M100XP2.0	30	120	150	30	140
Φ225	140	M120XP3.0	30	140	170	30	160
Φ250	160	M140XP3.0	30	150	180	35	190
Φ280	180	M160XP4.0	30	160	190	40	210
Φ300	200	M180XP4.0	35	160	195	40	230

標準 CHROE型 後法蘭型 Rear Flange Mounting Type



Unit:mm

BORE	CHROE TYPE																			
	A	B	FT	H	I	K	M	O	P	PM	PT	Q	R	S	U	V	X	Y	ZF	
Φ125	175	60	45	50	152	50	80	240	190	60	3/4"	6	18	100	60	50	15	15	245	
Φ150	200	80	50	50	180	55	80	280	240	60	1"	6	18	100	80	70	15	15	255	
Φ180	240	100	60	60	216	55	100	320	280	70	1"	6	18	110	95	85	20	20	285	
Φ200	260	125	65	70	242	65	100	350	310	70	1.1/4"	6	20	110	115	100	25	25	310	
Φ225	290	140	70	70	270	65	120	380	340	70	1.1/4"	8	20	110	135	120	25	25	315	
Φ250	330	160	75	75	298	70	120	440	380	70	1.1/4"	8	24	115	155	140	30	30	335	
Φ280	360	180	80	80	330	80	150	500	430	70	1.1/2"	10	26	115	175	150	30	30	355	
Φ300	380	200	85	90	350	80	150	550	460	90	1.1/2"	10	28	135	195	170	35	35	390	

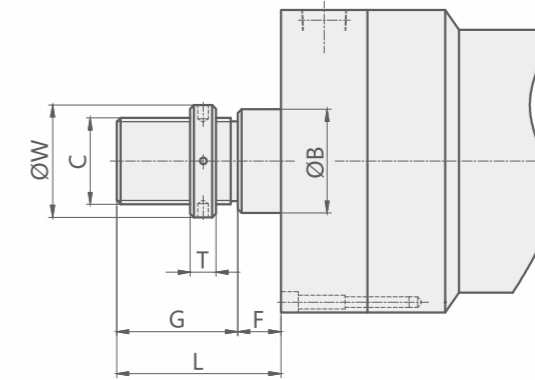
注意事項

- 1.CHRO行程超過1500mm時，活塞長度 (PM)自行加長，其加長尺寸請參閱特性資料表。
- 2.本系列軸心加大時，其相關尺寸依加大比例自行放大。

NOTE

- 1.Piston length proportionally extends if the stroke of CHRO is more than 1500mm,the extending length conforms to characteristics table.
- 2.In this hydraulic cylinder series,relevant size of other part proportionally extends when the rods is extending.

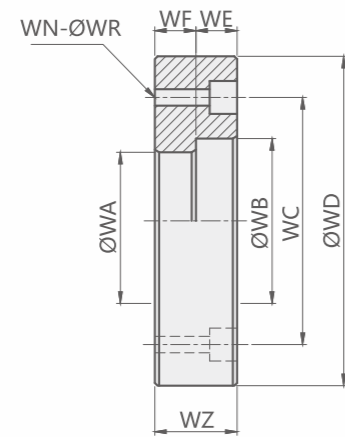
外牙型規格表 Vertical screw of rod



Unit:mm

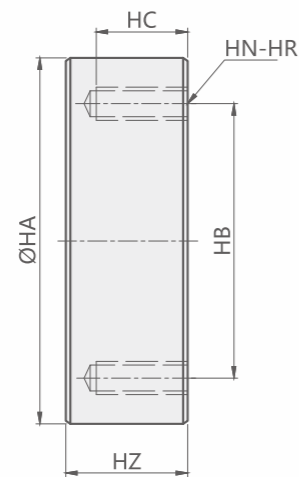
BORE	B	C	F	G	L	T	W
Φ125	60	M50XP2.0	25	70	95	15	65
Φ150	80	M70XP2.0	25	80	105	20	95
Φ180	100	M90XP2.0	30	100	130	30	120
Φ200	125	M100XP2.0	30	120	150	30	140
Φ225	140	M120XP3.0	30	140	170	30	160
Φ250	160	M140XP3.0	30	150	180	35	190
Φ280	180	M160XP4.0	30	160	190	40	210
Φ300	200	M180XP4.0	35	160	195	40	230

大型油壓缸軸心配件尺寸圖 Accessories For CHRO Series Cylinders



Unit:mm

TW 半月套 TW Rod end Mounting									
TYPE	WA	WB	WC	WD	WE	WF	WN	WR	WZ
TW-125	50	60	90	120	15	15	6	12	30
TW-150	70	80	110	140	15	15	6	12	30
TW-180	85	95	140	180	20	20	6	14	40
TW-200	100	115	160	200	25	25	6	14	50
TW-225	120	135	180	220	25	25	8	18	50
TW-250	140	155	210	260	30	30	8	18	60
TW-280	150	175	140	300	30	30	8	22	60
TW-300	170	195	260	320	35	35	8	22	70



Unit:mm

TH 焊接圖板 TH Rod end Mounting						
TYPE	HA	HB	HC	HN	HR	HZ
TW-125	120	90	30	6	M10xP1.5	40
TW-150	140	110	30	6	M10xP1.5	40
TW-180	180	140	35	6	M12xP1.75	45
TW-200	200	160	35	6	M12xP1.75	45
TW-225	220	180	40	8	M16xP2.0	50
TW-250	260	210	40	8	M16xP2.0	50
TW-280	300	240	45	8	M20xP2.5	55
TW-300	320	260	50	8	M20xP2.5	60

Material:SS41

