

# CHTB

## 薄型油壓缸

### CHTB HYDRAULIC PUSH PULL CYLINDER



#### 產品特性

體積小，節省空間，安裝空間受限制時的選擇。標準化規格，直接安裝，不需其它配件，降低成本。  
缸體材質採用機械構造用碳素鋼，內壁特殊加工處理，表面光滑，使用壽命長。軸向，側向油路板型免配管，提升整體美觀。

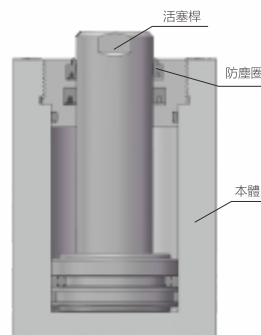
最大操作壓力：140 kgf/cm<sup>2</sup>  
最小操作壓力：5 kgf/cm<sup>2</sup>  
作動方式：複動式

#### FEATURES

The CHTB series' compact construction helps conserve work space and can be utilized in restricted areas. With the standardized structure, the cylinder can be installed directly and does not require any accessories to operate. The CHTB hydraulic cylinders are manufactured with industrial grade carbon steel. The smooth interior is processed specifically to enhance product performance and increase product lifespan.

Max. operating pressure : 140 kgf/cm<sup>2</sup>  
Min. operating pressure : 5 kgf/cm<sup>2</sup>  
Double acting

#### 剖面圖 Sectional view

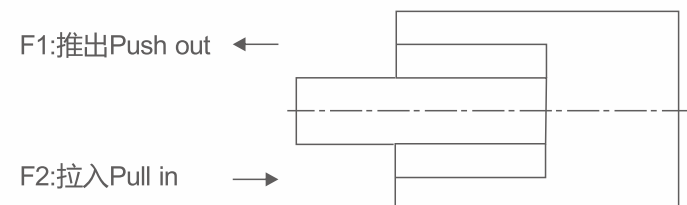


#### 注意事項

可接受訂製，歡迎與本公司洽詢。  
CHTB-LAM和CHTB-LWM系列，行程10mm無附鍵槽及平鍵。

#### NOTE

Customization is available upon request, please contact us for more info.  
CHTB-LAM and CHTB-LWM series, stroke 10mm without keyway and parallel key.



#### 訂購標示法 ORDERING INDICATION

##### 示例：CHTB-SD32-20N

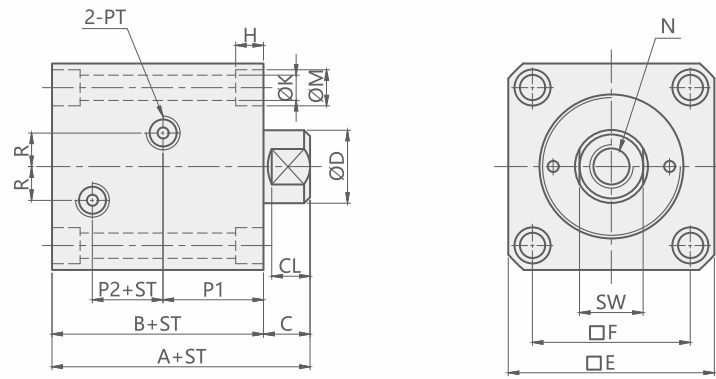
CHTB	系列 Series	CHTB	
SD	安裝型式 Mounting type	SD:	軸向單軸安裝型 Axial single end rod type
		SW:	軸向雙軸安裝型 Axial double end rod type
		SDMA:	軸向前油路板型 Axial front manifold type
		SDMB:	軸向後油路板型 Axial back manifold type
		LA:	側向單軸安裝型 Lateral single end rod type
		LW:	側向雙軸安裝型 Lateral double end rod type
32	油缸內徑 Hydraulic cylinder inside diameter	Φ20, Φ25, Φ32, Φ40, Φ50, Φ63, Φ80	
		20	標準行程 Standard stroke 5mm,10mm,15mm,20mm,25mm,30mm,35mm,40mm,50mm 其它行程請來電諮詢 For other stroke, please inquire.
N	軸端形式 Rod end type	N: 內牙 W: 外牙	N: Female thread W: Male thread

#### 規格參數表 SPECIFICATIONS

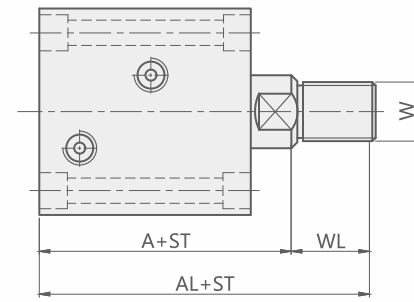
油缸內徑 HYDRAULIC CYLINDER INSIDE DIAMETER(mm)	活塞桿徑 PISTON DIAMETER(mm)	受壓面積 PRESSURE AREA(Cm <sup>2</sup> )		操作壓力 OPERATION PRESSURE(kgf/cm <sup>2</sup> )										使用溫度範圍 RANGE OF TEMPERATURE(°C)
				10		35		70		100		140		
		F1	F2	F1	F2	F1	F2	F1	F2	F1	F2	F1	F2	
Φ20	Φ12	3.14	2.01	31	20	110	71	220	141	314	201	440	281	-10~+60°C
Φ25	Φ14	4.91	3.37	49	34	172	118	344	236	491	337	687	472	-10~+60°C
Φ32	Φ20	8.04	4.9	80	49	281	172	563	343	804	490	1126	686	-10~+60°C
Φ40	Φ25	12.57	7.66	126	77	440	268	880	536	1257	766	1760	1072	-10~+60°C
Φ50	Φ30	19.64	12.57	196	126	687	440	1375	880	1964	1257	2750	1760	-10~+60°C
Φ63	Φ35	31.17	21.55	312	216	1091	754	2182	1509	3117	2155	4364	3017	-10~+60°C
Φ80	CHTB Φ45	50.27	34.37	503	344	1759	1203	3519	2406	5027	3437	7038	4812	-10~+60°C
	CHTM Φ40	50.27	37.7	503	377	1759	1320	3519	2639	5027	3770	7038	5278	-10~+60°C

使用流體：相當於ISO黏度等級的ISO-VG-32一般液壓油  
Recommended: ISO-VG-32 hydraulic oil equivalent to ISO viscosity grade

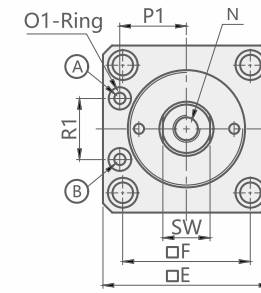
SD-N軸向單軸安裝之軸端內牙型



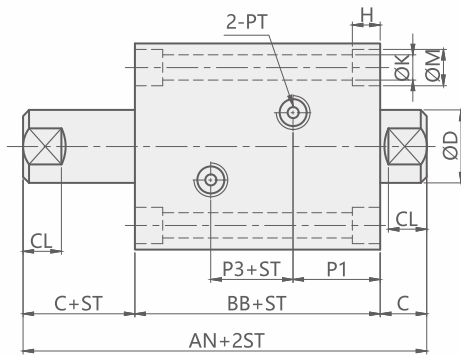
SD-W軸向單軸安裝之軸端外牙型



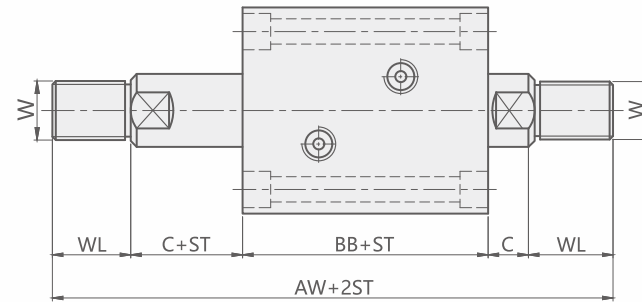
SDMA-N軸向前油路板之軸端內牙型



SW-N軸向雙軸安裝之軸端內牙型

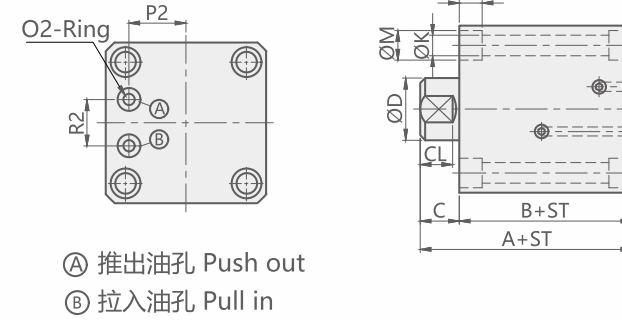


SW-W軸向雙軸安裝之軸端外牙型



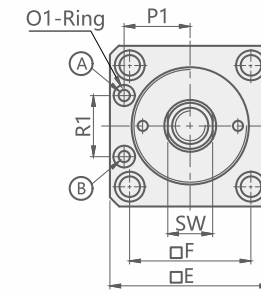
ST=Stroke

SDMB-N軸向後油路板之軸端內牙型

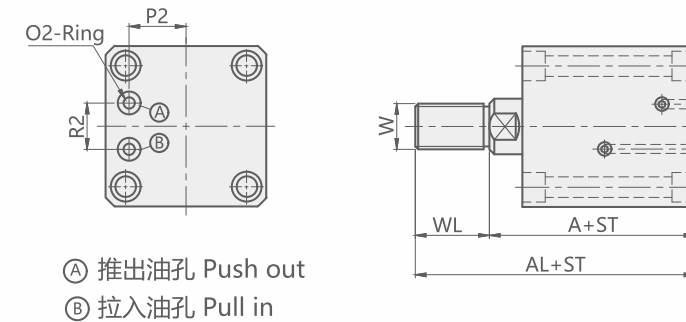


- Ⓐ 推出油孔 Push out
- Ⓑ 拉入油孔 Pull in

SDMA-W軸向前油路板之軸端外牙型



SDMB-W軸向後油路板之軸端外牙型



- Ⓐ 推出油孔 Push out
- Ⓑ 拉入油孔 Pull in

CHTB Hydraulic axial mounting type SDMA & SWMB Unit:mm

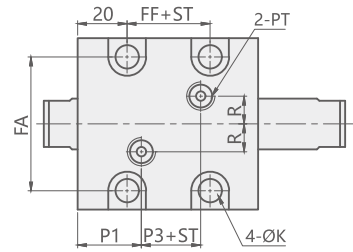
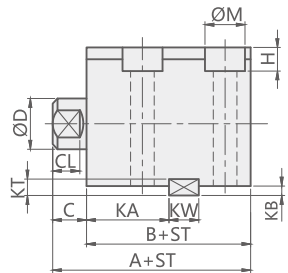
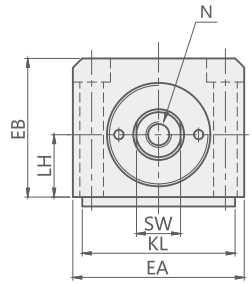
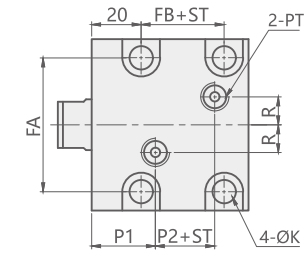
Bore	Φ20	Φ25	Φ32	Φ40	Φ50	Φ63	Φ80
A	51	53	64	65	71	80	95
AL	71	75	89	95	106	120	140
B	43	45	54	55	60	67	78
C	8	8	10	10	11	13	17
CL	6	6	7	7	8	10	14
D	12	14	20	25	30	35	45
SW	10	12	17	22	27	32	41
E	42	48	62	70	80	94	114
F	30	36	47	52	58	69	86
H	5.5	5.5	6.5	9	11	13	15
K	5.6	5.6	6.8	9	11	13	15
M	9	9	11	14	18	20	22
N	M8x1.25 x12D	M10x1.5 x15D	M12x1.75 x15D	M16x2.0 x20D	M20x2.5 x25D	M27x3.0 x35D	M30x3.5 x35D
W	M10x1.25	M12x1.25	M16x1.5	M22x1.5	M26x1.5	M30x1.5	M39x1.5
WL	20	22	25	30	35	40	45
SDMA	P1	16.5	19.5	24	27	32	38
	R1	13	18	24	26	27	35
	O1	S4	P4	P6	P6	P6	P8
SDMB	P2	13	16	20	24	29	35
	R2	11	13	20	20	20	26
	O2	P5	P7	P9	P9	P9	P11

CHTB Hydraulic axial mounting type SD & SW Unit:mm

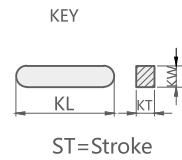
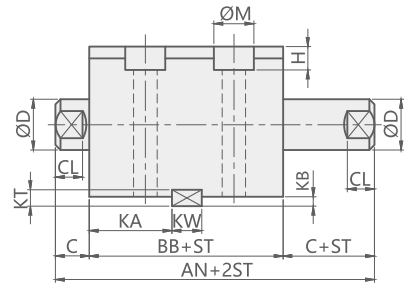
Bore	Φ20	Φ25	Φ32	Φ40	Φ50	Φ63	Φ80	Φ100
A	51	53	64	65	71	80	95	105
AL	71	75	89	95	106	120	140	165
AN	-	-	89	90	97	108	127	140
AW	-	-	139	150	167	188	217	260
B	43	45	54	55	60	67	78	88
BB	-	-	69	70	75	82	93	106
C	8	8	10	10	11	13	17	17
CL	6	6	7	7	8	10	14	14
D	12	14	20	25	30	35	45	56
SW	10	12	17	22	27	32	41	50
E	42	48	62	70	80	94	114	134
F	30	36	47	52	58	69	86	102
H	5.5	5.5	6.5	9	11	13	15	17.5
K	5.6	5.6	6.8	9	11	13	15	18
M	9	9	11	14	18	20	22	26
N	M8x1.25x12D	M10x1.5x15D	M12x1.75x15D	M16x2.0x20D	M20x2.5x25D	M27x3.0x35D	M30x3.5x35D	M36x4.0x40D
W	M10x1.25	M12x1.25	M16x1.5	M22x1.5	M26x1.5	M30x1.5	M39x1.5	M48x1.5
WL	20	22	25	30	35	40	45	60
P1	22.5	23	28	28	29.5	31	33	39
P2	11	12	14	15	18	20	27	28
P3	-	-	13	14	16	20	27	28
R	5	5	10	10	10	10	15	15
PT	1/8	1/8	1/4	1/4	1/4	3/8	3/8	3/8

CHTB Hydraulic side mounting type LA & LW Unit:mm

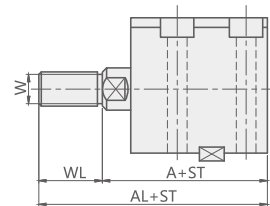
LA-N側向單軸安裝之軸端內牙型



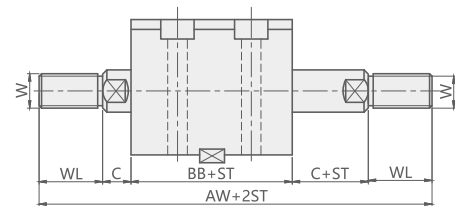
LW-N側向雙軸安裝之軸端內牙型



LA-W側向單軸安裝之軸端外牙型



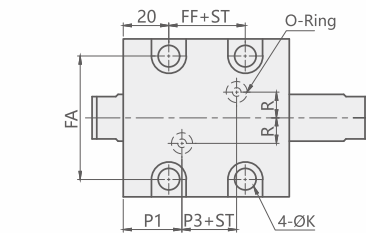
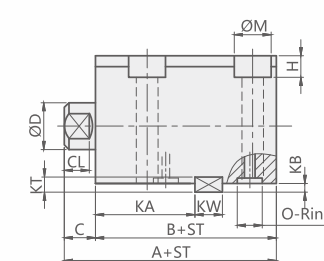
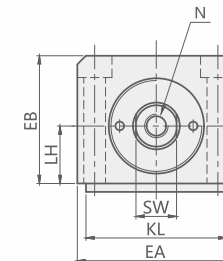
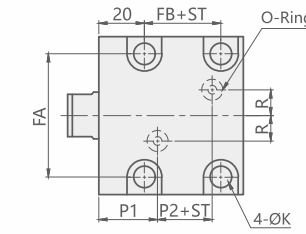
LW-W側向雙軸安裝之軸端外牙型



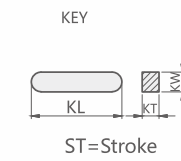
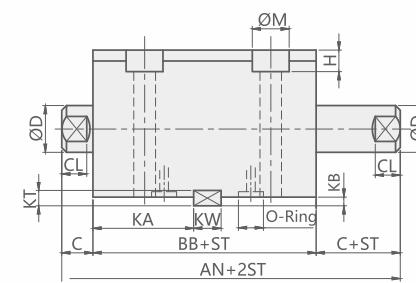
Bore	Φ32	Φ40	Φ50	Φ63	Φ80	Φ100
A	64	65	71	80	98	105
AL	89	95	106	120	143	165
AN	89	90	97	108	129	140
AW	139	150	167	188	219	260
B	54	55	60	67	81	88
BB	69	70	75	82	95	106
C	10	10	11	13	17	17
CL	7	7	8	10	14	14
D	20	25	30	35	45	56
SW	17	22	27	32	41	50
EA	70	80	94	114	134	160
EB	56	64	74	89	109	12
LH	25	29	34	42	52	62
FA	56	62	74	90	110	134
FB	24	23	27	32	41	44
FF	32	32	35	42	41	44
H	9	11	13	15	15	17
K	9	11	13	15	15	18
M	14	18	20	22	22	26
N	M12x1.75 x15D	M16x2.0 x20D	M20x2.5 x25D	M27x3.0 x35D	M30x3.5 x35D	M36x4 x40D
W	M16x1.5	M22x1.5	M26x1.5	M30x1.5	M39x1.5	M48x1.5
WL	25	30	35	40	45	60
P1	28	28	29.5	31	35	39
P2	14	15	18	20	28	28
P3	13	14	16	20	25	28
R	10	10	10	10	15	15
PT	1/4	1/4	1/4	3/8	3/8	3/8
KW	12	12	14	16	16	16
KT	8	8	9	10	10	10
KL	63	70	80	100	100	100
KA	28	28	29	31	34	34
KB	4.5	4.5	5	5.5	5.5	5.5

註：行程 < 20的無鍵槽及平鍵

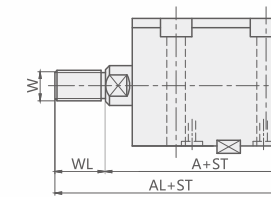
LAM-N側向油路板單軸安裝之軸端內牙型



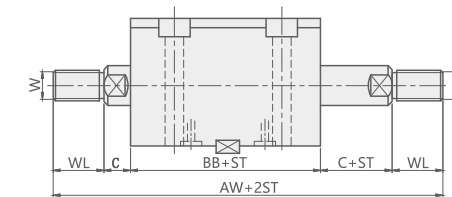
LWM-N側向油路板雙軸安裝之軸端內牙型



LAM-W側向油路板單軸安裝之軸端外牙型



LWM-W側向油路板雙軸安裝之軸端外牙型



CHTB Hydraulic manifold type LAM & LWM Unit:mm

Bore	Φ32	Φ40	Φ50	Φ63	Φ80
A	64	65	71	80	98
AL	89	95	106	120	143
AN	89	90	97	108	-
AW	139	150	167	188	-
B	54	55	60	67	81
BB	69	70	75	82	-
C	10	10	11	13	17
CL	7	7	8	10	14
D	20	25	30	35	45
SW	17	22	27	32	41
EA	70	80	94	114	134
EB	56	64	74	89	109
LH	25	29	34	42	52
FA	56	62	74	90	110
FB	24	23	27	32	41
FF	32	32	35	42	-
H	9	11	13	15	15
K	9	11	13	15	15
M	14	18	20	22	22
N	M12x1.75 x15D	M16x2.0 x20D	M20x2.5 x25D	M27x3.0 x35D	M30x3.5 x35D
W	M16x1.5	M22x1.5	M26x1.5	M30x1.5	M39x1.5
WL	25	30	35	40	45
P1	28	28	29.5	31	35
P2	14	15	18	20	28
P3	13	14	16	20	-
R	10	10	10	10	15
O	P9	P9	P11	P11	P11
KW	12	12	14	16	16
KT	8	8	9	10	10
KL	63	70	80	100	100
KB	4.5	4.5	5	5.5	5.5
KA	38	38	40	42	52