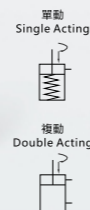
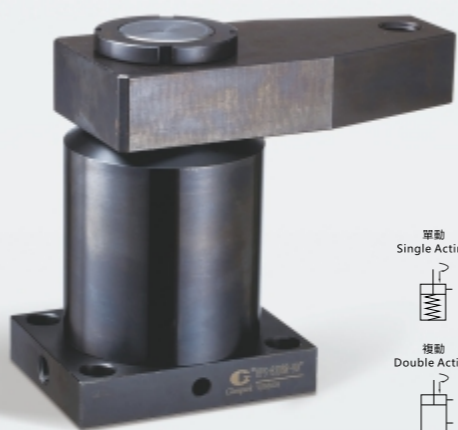


HPS

高壓轉角缸

HPS HIGH PRESSURE HYDRAULIC SWING CLAMP



產品特性

此型式油壓缸適用於夾持工件取放空間保持淨空,方便工件取放高壓夾持。
油壓缸夾持動作為下壓式,含有旋轉行程(請勿夾持工件)以及垂直下壓行程。本產品使用德製油封及進口零件,缸體內壁經特殊加工處理表面光滑,確保使用性能及壽命。
最大充油速度請參考特性資料,請勿使用過大充油速度,以免迴轉過快,如有迴轉不確定,請安裝流量控制閥,降低充油速度。

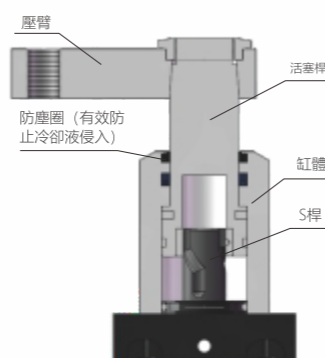
最大操作壓力: 250 kgf/cm²
最小操作壓力: 70 kgf/cm²
作動方式: 單動和複動式

FEATURES

The clamping mechanism of the HPS series includes a swing stroke and a vertical stroke. For operational instructions, do not clamp the workpiece during the rotation. The cylinder uses high-quality oil seals and components imported directly from Germany. The smooth interior wall is processed specifically to enhance product performance and increase product lifespan. Please refer to the specification chart for the maximum fluid supply. Installation of a flow control valve is highly recommended for better control.

Max. operating pressure: 250 kgf/cm²
Min. operating pressure: 70 kgf/cm²
Single acting and double acting

剖面圖 Sectional view



注意事項

夾緊及放鬆作動速度需適當放緩。
特殊壓臂長度及重量不得超過標準壓臂的1.5倍。
壓臂旋轉示意圖及安裝拆卸方式,請參見第4頁。

NOTE

The action and the speed of clamping / unclamping needs to be slowed down appropriately.
The length and weight of the customized clamping arm shall not exceed 1.5 times of the standard clamping arm.
Please refer to page 4 for the rotation diagram, installation instructions and removal methods of the clamping arm.

訂購標示法 ORDERING INDICATION

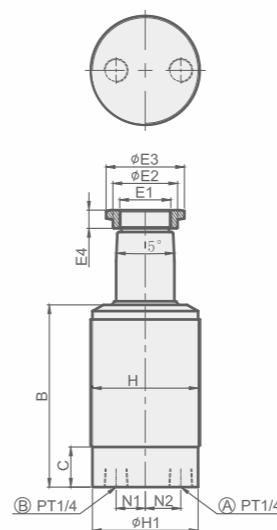
示例: HPS - 25SAR-90

HPS	系列 Series	HPS
25	油缸內徑 Hydraulic cylinder inside diameter	Φ25, Φ32, Φ40, Φ50, Φ63
S	作動方式 Acting type	S:單動式 Single acting D:複動式 Double acting
A	安裝型式 Installation	A: 全牙型 Threaded type B: 配管型 Line type C: 油路板型 Manifold type
R	轉角方向 Swing direction	R: 右轉下壓型 R: Turn right L: 左轉下壓型 L: Turn left
90	轉角角度 Swing angle	標準角度 Standard angle 90°(±2°) 訂做角度 Order angle 30°(±2°), 45°(±2°), 60°(±2°)

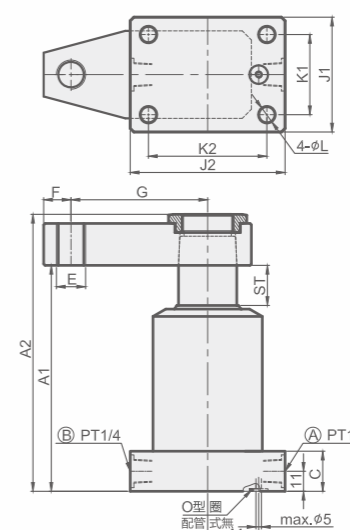
單動式Single-Acting

Unit:mm

THREADED TYPE



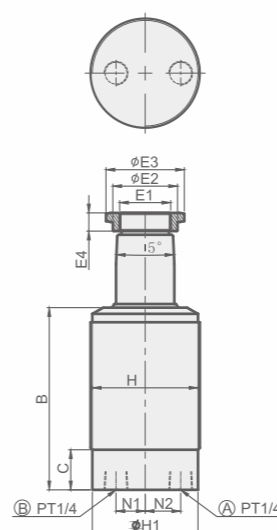
FLANGE TYPE



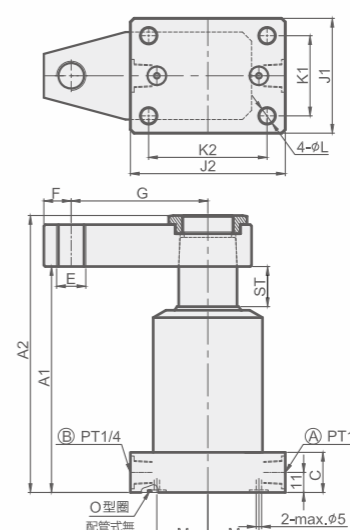
①夾持油孔 Clamping port ②排氣孔 Vent port

複動式Double-Acting

THREADED TYPE



FLANGE TYPE



①夾持油孔 Clamping port ②放鬆油孔 Unclamping port

型號	HPS-25	HPS-32	HPS-40	HPS-50	HPS-63
A1鬆開狀態	109	120.5	124	142	148
A2鬆開狀態	129	146.5	152	176	190
B	87	97	100	113	119.5
C	22	22	22	22	22
E	M10×1.5	M12×1.75	M16×2	M16×2	M20×2.5
E1	M18×1.5	M22×1.5	M28×1.5	M35×1.5	M43×1.5
ΦE2	23.5	28.5	35.5	45.5	54.5
ΦE3	27.7	33.5	43	53.1	63.5
E4	9	10	10	12	14
F	10	12	15	15	18
G	50	65	75	95	120
H	M45×1.5	M52×1.5	M60×1.5	M80×2.0	M90×2.0
ΦH1	43	50	58	78	88
J1	45	53	63	80	90
J2	65	73	85	100	115
K1	30	37	44	60	68
K2	50	57	65	80	90
ΦL	6.5	9	9	13	15
M	15	20	28	31	37.5
N1	13	14.5	16	19	25.5
N2	13	16	19.5	26.5	34
O型圈(僅C型) O-Ring(C type)	P7	P7	P7	P7	P9

規格參數表 SPECIFICATIONS

型號	理論夾持力(250 kgf/cm ²) CLAMPING FORCE AT 250 kgf/cm ² (kgf)	轉角行程	夾緊行程	總行程	拉入容積	推出容積	拉入受壓面積	推出受壓面積	使用溫度範圍	
MODEL	單動系列 Single acting	複動系列 Double acting	SWING STROKE (mm)	CLAMPING STROKE (mm)	TOTAL STROKE(mm)	CYLINDER CAPACITY CLAMP(cm ³)	CYLINDER CAPACITY UNCLAMP(cm ³)	EFFPISTON AREA CLAMP(cm ²)	EFFPISTON AREA UNCLAMP(cm ²)	RANGE OF TEMPERATURE(°C)
HPS-25	380	440	9	11	20	3.54	9.80	1.77	4.9	-10~+70°C
HPS-32	650	780	10	13	23	7.20	18.49	3.13	8.04	-10~+70°C
HPS-40	1140	1300	10	12	22	9.94	27.63	4.52	12.56	-10~+70°C
HPS-50	1580	1760	12	15	27	19.09	53.00	7.07	19.63	-10~+70°C
HPS-63	2560	2880	12	15	27	31.16	84.13	11.54	31.16	-10~+70°C